

# FARM BUSINESS APPRENTICE 2026 APPLICATION PACK



SUPPORTED BY



# INTRODUCTION

The Farm Business Apprentice 2026 presents a real farming opportunity for young farming entrepreneurs to put forward a practical business proposal based on a model farm.

Set in the rolling countryside of Crediton, Fordton Farm represents the future of modern, commercially driven agriculture, combining productive land, strong infrastructure, and access to established supply chains across the South West.

This opportunity is designed to challenge applicants to develop a commercially focused farm business proposal that reflects the realities of modern agricultural enterprise.

## ABOUT FORDTON FARM

Fordton Farm is a 250-acre unit secured on a 25-year tenancy.

The land comprises:

200 acres of productive arable ground

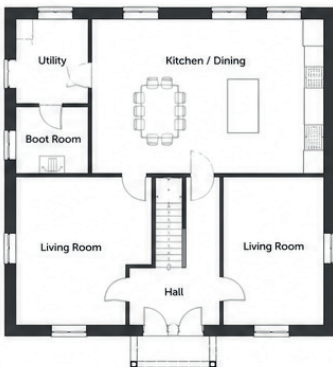
- Well suited to cereals such as wheat, barley, and oilseed crops
- Designed for efficient mechanisation
- Suitable for effective crop rotation and soil management practices

50 acres of marginal or shrub land

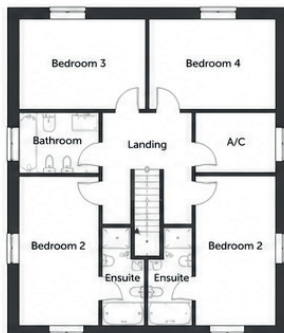
- Suitable for environmental schemes
- Grazing opportunities
- Diversification projects

The arable land reflects typical South West farming systems, supporting long-term productivity and commercial farming operations.

GROUND FLOOR PLAN



FIRST FLOOR PLAN



FARMHOUSE – INDICATIVE 3D VISUALISATION



FARMHOUSE – INDICATIVE ELEVATIONS



## SITE PLAN



## FARM INFRASTRUCTURE

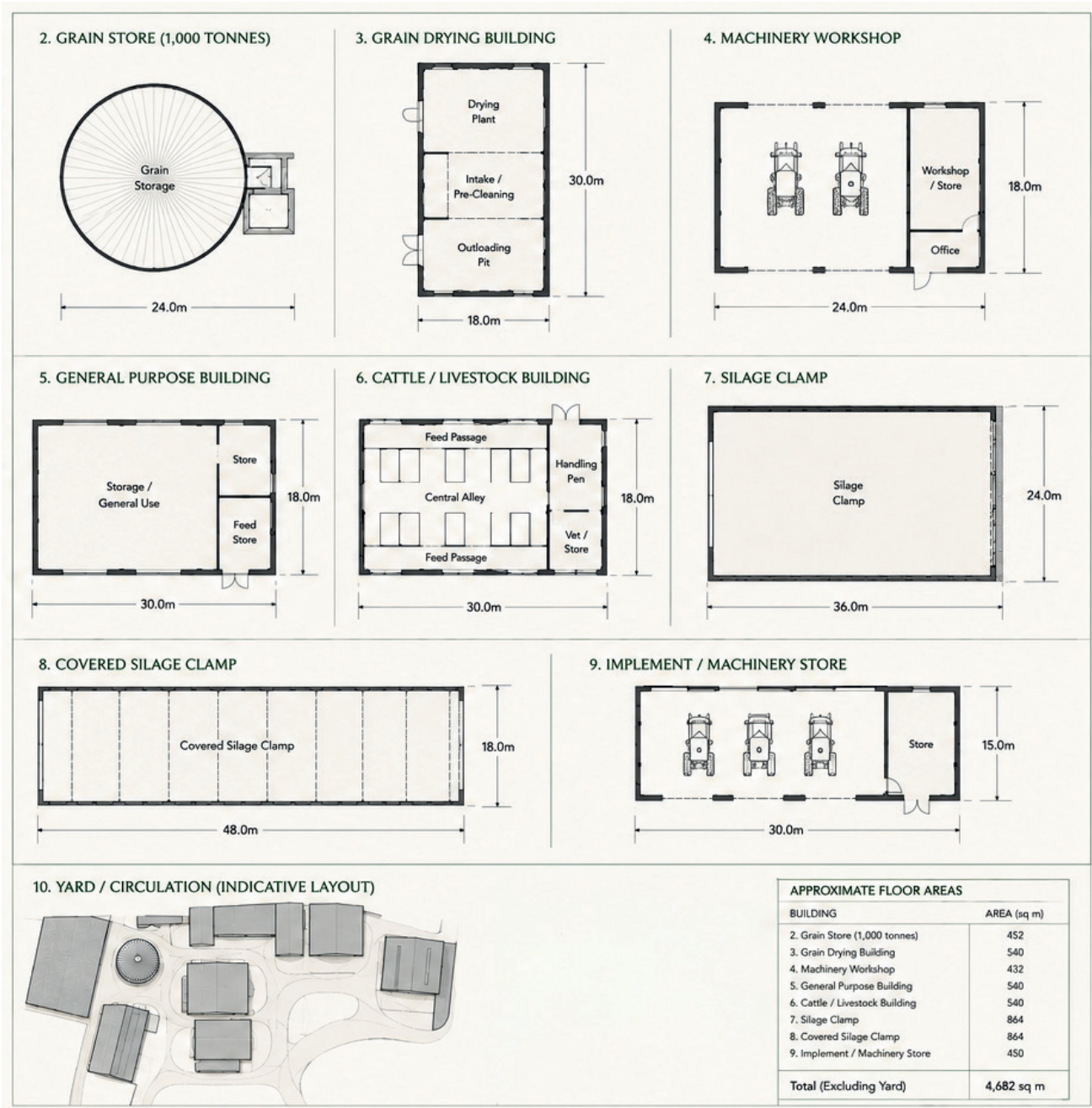
Fordton Farm is a fully equipped business unit, enabling immediate operational activity.

The farm includes:

- 1,000-tonne grain store
- Large clamp space for silage or bulk storage
- Extensive agricultural buildings
- Reliable on-site electrical infrastructure
- Reliable mains water supply

These facilities allow for drying, cleaning, and storing crops before they enter wider supply chains, helping maintain quality and maximise market value.

## BUILDING PLANS



## ADDITIONAL FARM FEATURES

Applicants may also wish to consider the following features within their proposal:

- A 30,000-volt line crossing the farm
- Four ponds with road access, covering approximately 3 acres within the shrub land
- Top fields with road access and views towards Dartmoor
- A 5-acre flat arable field adjoining the main Exeter to Crediton road

# THE BUSINESS OPPORTUNITY

The opportunity places a strong emphasis on business potential and diversification.

Applicants are encouraged to think beyond traditional farming models and develop commercially robust and scalable enterprises.

Potential opportunities may include:

## FARMING ENTERPRISES

- Arable cropping
- Contract farming arrangements
- Livestock integration including:
  - Cattle
  - Calves
  - Pigs
- Poultry systems

## DIVERSIFICATION OPPORTUNITIES

- Environmental stewardship schemes
- Renewable energy initiatives such as solar or biomass
- Contract growing
- Niche crops
- Storage or logistics partnerships

Across the UK, farms are increasingly adopting diversified income streams to remain competitive, combining production with innovation and efficient land use.

# WHAT APPLICANTS NEED TO SUBMIT

Applicants must submit:

## WRITTEN PROPOSAL

**Maximum 1,000 words**

Your proposal should outline:

- Your background
- Your business concept
- Financial thinking
- Operational thinking
- Profitability
- Scalability
- Risk awareness
- Innovation

## VIDEO PITCH

**Maximum 2 minutes**

Applicants must also submit a clear and commercially focused video pitch outlining their proposal.

Applicants should submit an individual business project application of Fordton Farm. This is not a whole farm business appraisal.

# HOW TO APPLY

To apply for the Farm Business Apprentice 2026, applicants must complete the application form on the CMC website, along with:

- A written proposal (maximum 1,000 words)
- A video pitch (maximum 2 minutes)

Applications must be submitted before the closing date of 31 July 2026.

Further details and submission instructions can be found on the application page of the website.

# FINALISTS STAGE

Finalists will be invited to pitch their proposal to a panel of judges, supported by industry experts, to compete for the title of:

## Farm Business Apprentice 2026

The opportunity is designed to provide valuable industry insight, experience, and connections within the agricultural sector.

# THE PRIZE

The winner will receive:

- A £1,500 prize fund
- A day on-farm with each member of the judging panel:
  - Tim Martin
  - Di Wastenage MBE
  - Tom Cleave

This unique opportunity will give the winner direct insight into a range of successful agricultural businesses across the South West, offering valuable experience, industry knowledge, and professional connections.

The programme has been designed to provide practical industry exposure and support the development of future agricultural entrepreneurs.

Please note: The Farm Business Apprentice is a competition-based opportunity focused on business proposals and industry mentoring, rather than an employment or apprenticeship placement.

# PROGRAMME TIMELINE

STAGE	DATE
Programme Opens	1st June 2026
Programme Closes	31st July 2026
Winner Announcement & Gala Dinner	10th September 2026

The winner will be announced at a formal event bringing together all candidates and providing an opportunity for networking and recognition within the industry.

## WHY APPLY?

This opportunity matters because agriculture is evolving rapidly. Modern farms must balance productivity, environmental responsibility, market volatility, and technological advancement.

The Farm Business Apprentice is designed to identify individuals who can lead that transition and contribute to the future of the industry. Ultimately, this is more than an application; it is an opportunity to run a real farm business, work alongside industry leaders, and build a long-term agricultural career. Applicants are encouraged to take this step and define the future of Fordton Farm.

## VISUALS & PLANS

All visuals (including plans and layouts) shown in this document have been AI-generated and are intended solely to illustrate a concept. They are all fictional and do not represent an actual farm, location, business, or development.