

TOMORROW'S FARMER



OCTOBER / 2025
ISSUE 75

YOUR NEWSLETTER FROM CREDITON MILLING COMPANY



INSIDE ►

It's been a funny old summer for grass.

The dry spell earlier on knocked growth backhard, and when the rain finally came, it brought plenty of leafy grass but not much substance to it. There's been no shortage of grazing in some areas...

Continued on page 3

02 CATCH UP WITH
THE CMC PODCAST

03 GETTING THE BEST FROM YOUR
BEEF CATTLE THIS WINTER

04 LIGHTING FOR
FREE-RANGE LAYERS

EVOLUTION Yield Guard: Smarter nutrition for sustainable performance

DAIRY

Most dairy farmers know how hard it is to keep cows performing well while trying to cut emissions and manage costs. Feed efficiency, milk quality and sustainability all matter, but so does keeping things practical and workable on farm. After almost ten years of Evolution, it's fair to say the range has evolved — and Yield Guard is the next step forward.

Built on the same proven soya-free principles, it helps cows make the most of every bite, supporting rumen health, steady yields and a lower carbon footprint.

Why choose Evolution Yield Guard?

Dairy farming has never been straightforward, and it's getting tougher to balance good performance with environmental responsibility. Yield Guard takes a science-led yet practical approach, combining proven feed technologies that help cows make better use of what they eat. It's about improving rumen function, supporting milk output and doing it all more efficiently — which means less waste and a smaller carbon cost per litre of milk.

While sustainability is still a big focus, there's growing talk about resilience. Markets shift, feed prices change and the weather can turn things upside down overnight. Building resilience means setting up your herd and feeding system to cope with whatever comes along. Yield Guard helps by improving nutrient use and keeping the rumen stable, making performance more reliable day in, day out.

Powered by Actisaf® and Optimilk®

At the centre of Yield Guard are two complementary feed technologies that work together to support rumen efficiency.

Actisaf® Sc47 live yeast from Phileo by Lesaffre has been proven in over twenty independent trials to improve feed efficiency and milk yield. Its verified Life Cycle Assessment shows a 5% reduction in CO₂e per litre of milk, equal to around 56 tonnes of CO₂e saved for every million litres produced.

Optimilk® from Neofeed, is a natural blend of aromatic compounds that help the rumen use protein. Consistent benefits for milk production, lower milk urea, and better fertility have been shown across Europe and Ireland.

Continued on page 2

EVOLUTION Yield Guard: Smarter nutrition for sustainable performance

Continued from page 1

Together, these two technologies help the rumen's microbes work smarter, turning more feed into milk and less into methane.

A natural fit within the Evolution range

The Evolution range already helps farmers meet processor requirements for soya-free and palm-free diets, supporting sustainability targets across the supply chain. Yield Guard strengthens that approach, improving rumen health, nutrient use and feed efficiency — all key parts of building a more resilient and productive herd.

Real gains, lasting benefits

On-farm results have shown steady, positive improvements in areas like rumen stability, fertility, production and overall feed efficiency. The exact gains will always depend on each herd and system, but the trend is clear — Yield Guard supports a more balanced and dependable feeding approach. It fits easily into any soya-free or palm-free Evolution formulation, helping farmers get



more from their cows while keeping performance consistent and emissions under control.

Moving dairy nutrition forward

By bringing together proven microbial science and practical on-farm performance, Evolution Yield Guard offers a smarter, more responsible way to feed dairy cows. It supports

healthier rumens, steadier yields and stronger long-term resilience — good for the cows, good for the farm, and good for the planet.



MATT RANGE 07809 306571
FORAGE & NUTRITION SPECIALIST

CATCH UP WITH THE CMC PODCAST

The podcast has been running for several years now, bringing together our nutritionists, guest farmers and industry experts to share practical insight, discussion and the occasional bit of good-natured debate. Topics range from feed efficiency and sustainability to herd health, forage, poultry and day-to-day farm management.

For those who don't follow our social media pages, or may have missed it, don't forget you can listen to the CMC Podcast — where the Crediton Milling team chats all things farming, feed and livestock.

Whether you're in the parlour, out feeding calves or on the move between fields, it's a great way to stay in touch with what's happening across the industry.

You can find all the latest episodes on the Crediton Milling website, or wherever you usually listen to podcasts.



Visit [creditonmilling.co.uk](https://www.creditonmilling.co.uk) to have a listen and catch up on the latest conversations

Getting the best from your beef cattle this winter

BEEF & SHEEP

It's been a funny old summer for grass. The dry spell earlier on knocked growth back hard, and when the rain finally came, it brought plenty of leafy grass but not much substance to it.

There's been no shortage of grazing in some areas, but the low dry matter means many cattle haven't quite hit the growth rates we'd have liked.

With housing time now approaching, it's worth taking a good look at winter rations to keep them moving in the right direction.

Forage first

Forage will make up most of the diet through winter, whether it's silage, hay, or straw. After such a mixed season, forage supplies and quality will vary from farm to farm, so it pays to make the best use of what you've got. Forage is still the cheapest feed on the place, but its quality can change a lot, even within the same clamp, so it's worth

getting it tested. Knowing the energy, protein, and fibre levels means you can plan a ration that keeps cattle growing steadily without wasting feed.

Try to match your better-quality silage to the cattle that need it most, such as youngstock and those close to finishing. Dry cows and stores will do perfectly well on more fibrous material. Good clamp management and tidy feeding-out also make a big difference, helping to cut waste and reduce spoilage.

What to feed

Even with decent forage, most cattle will need a bit of extra help to keep weight gains on track, particularly

the finishing groups. Concentrates based on cereals provide quick energy, while feeds like beet pulp or soya hulls release energy more slowly and help keep rumens settled. Growing cattle need plenty of protein for muscle development, so it's important to get the balance right between rumen-degradable and by-pass protein for steady, efficient growth.

Minerals often get overlooked, but they're a key part of any ration. A well-balanced mineral pack will support immunity, fertility, and frame development, all of which are under extra pressure when cattle are housed.

Things to watch over winter

Once stock are inside, management becomes that bit more hands-on. Overcrowding can knock intakes and slow growth, so make sure there's enough space at the feed face. Keep feeding times as consistent as possible, as steady intakes usually mean better gains. Clean water is a must, and it's surprising how often that gets



overlooked. Dirty troughs or slow flow can easily upset rumen function.

Also, keep an eye out for any signs of coughing or laboured breathing, especially in young cattle. Early cases of pneumonia can usually be managed if caught quickly, but it's always worth speaking to your vet for the right advice and treatment options. Good ventilation makes a big difference too, helping to keep the air moving and disease pressure down.

It's also a good time to review your worming and parasite control plan. After the damp end to the grazing season, lungworm and fluke could still be a concern, especially in cattle that stayed out late or grazed wetter ground. Worm burdens carried into housing can slow growth and reduce feed efficiency right through winter. A housing dose, guided by faecal egg counts and veterinary advice, will help tidy up any lingering worms, lungworm, or fluke so cattle start winter clean and healthy.

Looking ahead

Winter's a great time to get cattle back on track and set them up for turnout or finishing. With the right balance between forage, concentrate, and minerals, and a bit of attention to health and housing, they'll keep growing efficiently through the colder months and be ready to make the most of the grass next spring.



ROB MACHIN
RUMINANT PLACEMENT STUDENT

Lighting for free-range layers: why experience counts

POULTRY

As daylight hours shorten, lighting becomes one of the most powerful tools in flock management. When handled well, it keeps egg output steady, supports shell quality, and helps maintain calm, stable behaviour.

Poorly managed lighting, on the other hand, can cause drops in lay, stress, or feather pecking, often at the worst possible time of year.

Good lighting isn't just about installing the right kit. It's about knowing how to use it. Experienced advisors understand how birds perceive light, how indoor and outdoor conditions interact, and how subtle changes in timing or intensity can alter both welfare and performance. They can see problems developing before they show up in production data — something technology alone can't do.

Core principles that always hold true

Consistency still trumps complexity. Birds rely on stable switch-on and switch-off times far more than on the latest light colour or spectrum. Indoor lighting should complement natural daylight, starting slightly before sunrise and finishing after sunset so the flock perceives one continuous day.

Dusk and dawn transitions of 15 to 20 minutes allow birds to settle calmly, avoiding panic flights or crowding. Lighting intensity should sit around 10–20 lux at feeder height; brighter conditions rarely improve results and can create restlessness.

Modern LED systems now offer the flexibility to adjust colour tones, from warmer (red-rich) light to cooler (blue-green) shades. The exact balance is less important than keeping the light stable, dimmable, and appropriate for the flock's stage. A knowledgeable advisor can fine-

tune these details and match the setup to your specific house design and management style. Just a note, some LED's aren't dimmable and often in the past we've seen LED's flicker (not visible to the human eye) which can cause considerable stress to your birds.

Why expertise matters more than ever

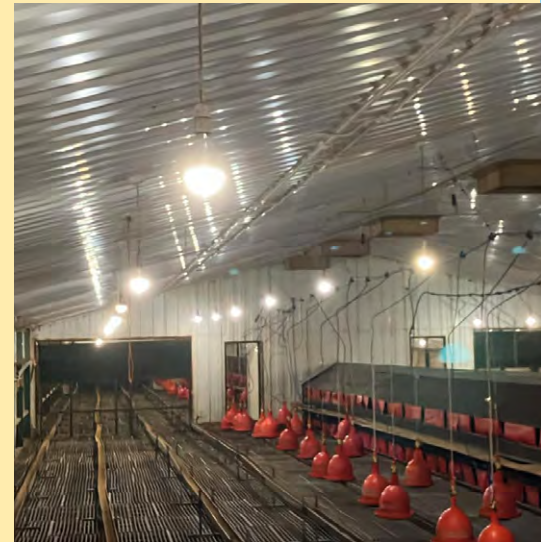
Lighting programmes influence nearly every aspect of performance — reproduction, behaviour, feed intake, and even skeletal health. Poorly timed or uneven light schedules can unsettle birds, disrupt the laying cycle, or reduce feed efficiency.

An experienced advisor brings more than just technical know-how. They help design and calibrate systems

October call to action

Now is the time to review your lighting programme.

- Check timers and dimmers to make sure artificial light properly brackets natural daylight.
- Confirm dusk and dawn transitions are functioning smoothly.
- Ask your advisor for a full photoperiod plan and maintenance schedule, not just lamp specifications.
- If refurbishing or planning new housing, build in natural daylight to meet the 3% requirement if RSPCA certification is needed.



correctly, ensure dusk and dawn ramps work smoothly, and keep timers and dimmers accurate through seasonal changes. They can interpret subtle flock behaviour — the sort of observation that takes years of stockmanship to develop — and link it back to the lighting regime. Their role also extends to compliance. The latest RSPCA welfare standards will require free-range systems to provide at least 3% natural daylight in housing at new build or refurbishment. Advisors can help plan for this and integrate natural light effectively, ensuring both compliance and bird comfort.

Lighting remains one of the most influential yet overlooked aspects of flock management. Having experienced guidance behind your programme ensures that every switch-on and switch-off supports bird welfare, consistent lay, and overall flock stability through the darker months ahead.



WILL WHITE 07545 504138
POULTRY SPECIALIST